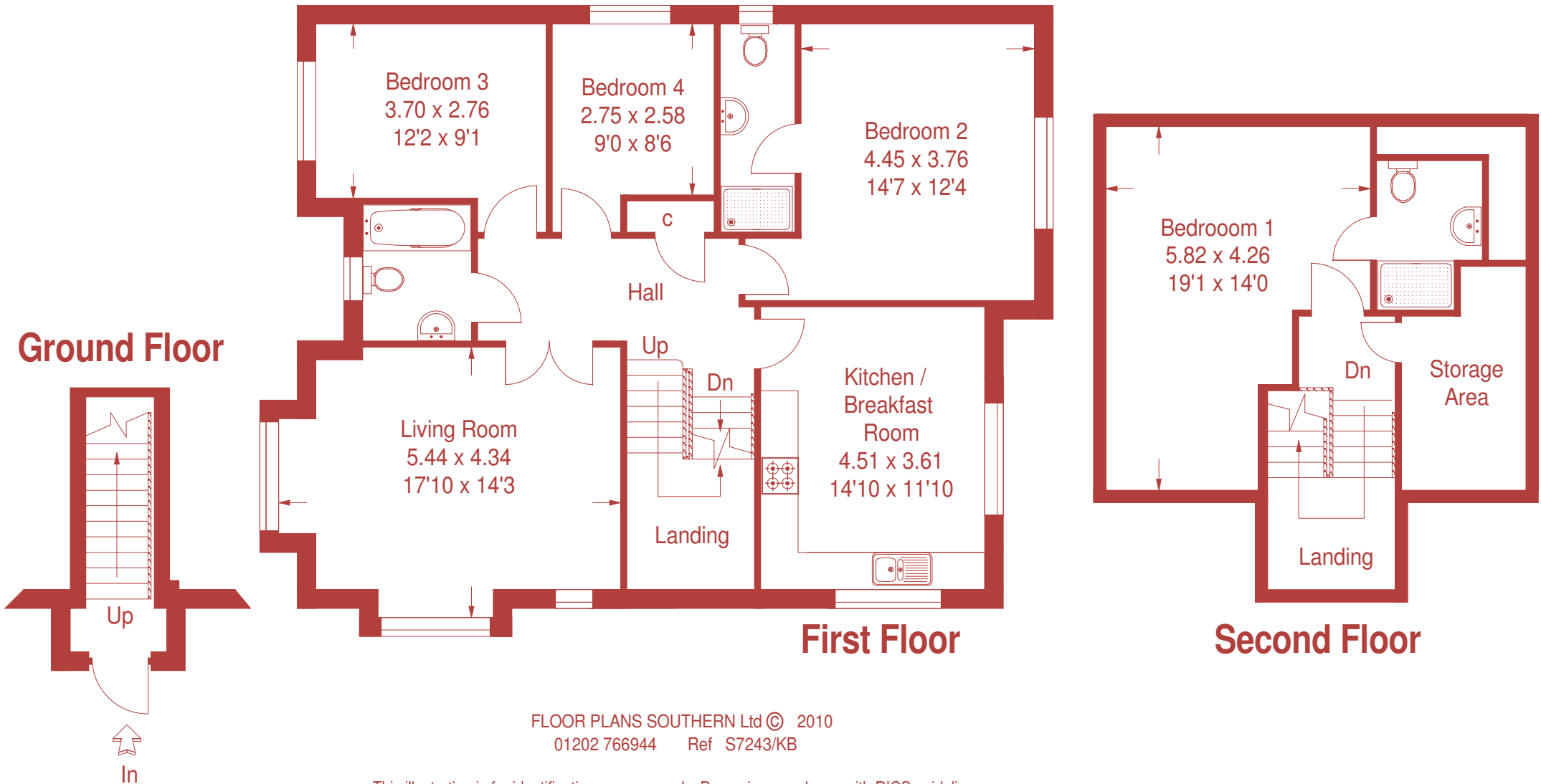


First and Second Floor Apartment, 3A Tennyson Road, Wimborne

Flat 2 Approximate Gross Internal Area :- 141.6 sq m / 1525 sq ft



This illustration is for identification purposes only. Drawn in accordance with RICS guidelines. Not drawn to scale, unless stated. It has been created using architectural drawings as reference material, therefore the dimensions stated may vary in the completed property. Whilst every care was taken in the preparation of this plan, please check all dimensions, shapes & compass bearings before making any decisions reliant upon them.